



Apt 10 Bluecoat House 2 Bluecoat Rise, Sheffield, S11 9DX

Saxton Mee

Apt 10 Bluecoat House 2 Bluecoat

Offers Around

£325,000

A superb beautifully appointed and upgraded ground floor apartment offered for sale with immediate vacant possession and no chain, situated in this exclusive development close to excellent local amenities. This beautiful property offers high ceilings, stunning windows with plantation shutters and a great deal of spacious accommodation with two double bedrooms and one with ensuite shower room.

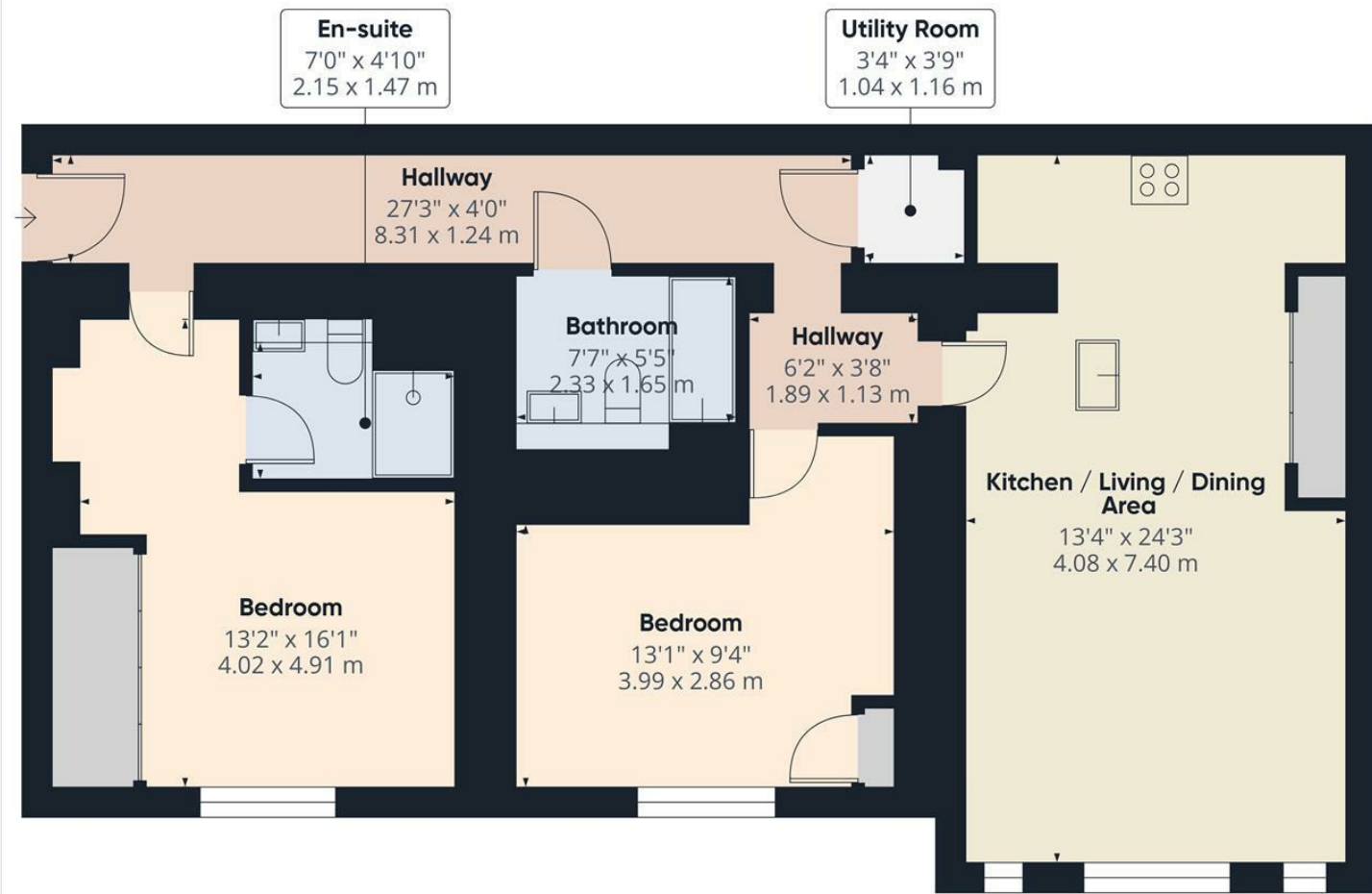
The property briefly comprises ground floor communal entrance hallway with security entrance system, long private entrance hall with large built in cupboard, master bedroom with mirrored wardrobes and ensuite shower room. Double bedroom two with built in wardrobes, bathroom with full suite, superb open plan living / kitchen area with good quality range of built in units and a range of built in appliances and Quartz work surfaces and central island, adjacent dining area and lounge area with deep feature windows and built in plantation shutters.

Externally the property has an allocated parking space plus visitor parking and has attractive well maintained communal grounds.

- For sale with immediate vacant possession and no chain
- Stunning ground floor luxury apartment
- Feature Plantation Shutters
- Secure entry system
- Allocated car parking space plus visitor parking
- Two double bedrooms, master bedroom with ensuite shower room
- Fabulous open plan living / dining kitchen
- Close to vibrant Ecclesall and Sharrow Vale Road area
- Highly sought after exclusive private development







Approximate total area^m
869 ft²
80.7 m²

(1) Excluding balconies and terraces

Calculations reference the RICS IPMS 3C standard. Measurements are approximate and not to scale. This floor plan is intended for illustration only.

GIRAFFE360



While we endeavour to make our sales particulars fair, accurate and reliable, they are only a general guide to the property and, accordingly, if there is any point, which is of particular importance to you, please contact the relevant office. The Agents have not tested any apparatus, equipment, fittings or services and so cannot verify they are in working order. The buyer is advised to obtain verification. Please note all the measurement details are approximate and should not be relied upon as exact. All plans, floor plans and maps are for guidance purposes only and are not to scale. Under no circumstances should they be relied upon as exact or for use in planning carpets and other such fixtures, fittings or furnishings. YOUR HOME IS AT RISK IF YOU DO NOT KEEP UP REPAYMENTS ON A MORTGAGE OR OTHER LOAN SECURED ON IT. 'A Life Assurance policy may be requested.' 'Written Quotations of credit terms available on request.'

Banner Cross
T: 0114 268 3241
E: bannercross@saxtonmee.co.uk
www.saxtonmee.co.uk

Hathersage
T: 01433 650009
E: hathersage@saxtonmee.co.uk

Bakewell
T: 01629 815307
E: bakewell@saxtonmee.co.uk

Matlock
T: 01629 828250
E: matlock@saxtonmee.co.uk